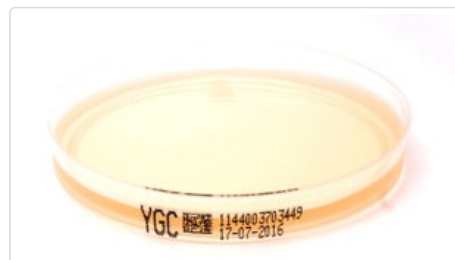


Teast Extract Glucose Chloramphenicol Agar (YGC Agar) (YGC)

Abbreviazione: YGC
Numero articolo: 40-1144
Scheda: Petri Dish, 90mm
Colore: Yellowish, transparent
Condizioni di stoccaggio prodotti: Dry, in closed bag, at 4-10°C
Data di scadenza: 6 Months
Valore pH: 6.6 ± 0.2 bei 25°C



Destinazione e applicazione

Teast Extract Glucose Chloramphenicol Agar (YGC Agar) for the detection and enumeration of yeasts and moulds in food stuffs. Chloramphenicol is added to inhibit bacterial growth.

Composizione tipica

in g per 1 litre of Nutrient medium

Yeast Extract	5
Glucose	20
Chloramphenicol	0.1
Agar	10

*Adjusted as required to meet performance standards

Controlli di qualita' microbiologici

The Microbiological Performance Test is carried out in accordance with the requirements BS EN ISO 11133:2014.

Produktivität

Incubation Conditions: see chart; Inoculum Concentration of Target Organisms: 10 – 100 CFU

Organism	Type Strain	Specification	Colony morphology
Candida albicans (2-3 days at 30-35°C)	ATCC 10231/WDCM 00054	50–130 %	Whitish colonies
Candida albicans (3-5 days at 20-25°C)	ATCC 10231/WDCM 00054	50–130 %	Whitish colonies
Aspergillus brasiliensis (2-3 days at 30-35°C)	ATCC 16404/WDCM 00053	50–130 %	Brown to black conidia on light mycelium
Aspergillus brasiliensis (3-5 days at 20-25°C)	ATCC 16404/WDCM 00053	50 – 130 %	Brown to black conidia on light mycelium

Selectivity

Incubation conditions: 24±4 hours at 36±2°C; Inoculum concentration: Target organisms: 10,000–1,000,000 CFU

Organism	Type Strain	Specification	Colony morphology
Escherichia coli	ATCC 8739/WDCM 00012	Complete inhibition	-
Bacillus subtilis	ATCC 6633/WDCM 00003	Complete inhibition	-

Microbial Contamination

Incubation conditions: 5–7 days at 20–25°C and 5–7 days at 30–35°C

Specification

No microbial contamination