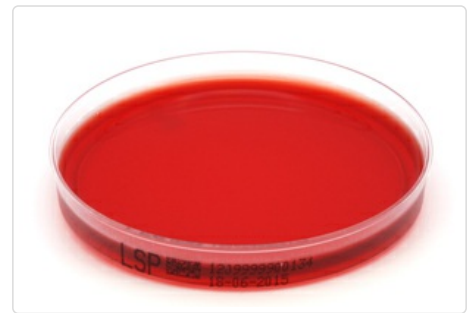




Listerien-Selektivagar Palcam

Nach § 64 LFGB

Abbreviazione: LSP
Numero articolo: 40-1209
Scheda: Petri dish, 90mm
Colore: Red, transparent
Condizioni di stoccaggio prodotti: Dry, Closed at 4-10°C
Data di scadenza: 2 Months
Valore pH: 7.2 ± 0.2 at 25°C



Destinazione e applicazione

The Listeria Selektivagar Palcam is used for the isolation and detection of Listeria monocytogenes from food (§ 64 LFGB), biological sample material and heavily contaminated samples from the environment.

Composizione tipica

in g per 1l Medium

Peptone	23
Starch	1
Sodium chloride	5
Yeast extract	3
D-Glucose	0.5
D-Mannitol	10
Esculin	0.8
Ammonium Iron(III)-citrate	0.5
Lithium chloride	15
Phenol red	0.08
Acriflavin-Hydrochloride	0.005
Agar	12

*Adjusted as required to meet performance standards

Controlli di qualita' microbiologici

The microbial performance test is carried out in conformity with the requirements of DIN EN ISO 11133.

Productivity

Incubation conditions: 44 ± 4 hours at 37 ± 1 °C; Inoculation concentration: 80 – 120 CFU

Organism	Test strain	Specification	Colony morphology
Listeria monocytogenes 4b	ATCC 13932 / WDCM 00021	50 – 130 %	Grey green to black colony with black background

Selectivity

Incubationsbedingungen: 44 ± 4 Stunden bei 37 ± 1 °C; Beimpfungskonzentration: 10.000 – 1.000.000 KBE

Organism	Test strain	Specification	Colony morphology
Escherichia coli	ATCC 8739 / WDCM 00012	Complete inhibition	-
Enterococcus faecalis	ATCC 19433 / WDCM 00009	Complete inhibition	-

Specificity

Incubation conditions: 44 ± 4 hours at 37 ± 1 °C; Inoculations concentration: 1.000 – 10.000 CFU

Organism	Test strain	Specification	Colony morphology
Listeria innocua	ATCC 33090 / WDCM 00017	50 – 130 %	Grey green to black colonies with black background

Microbial Contamination

Incubation conditions: 5 – 7 days at 20 – 25 °C and 5 – 7 at 30 – 35 °C

Specification

Without microbial contamination