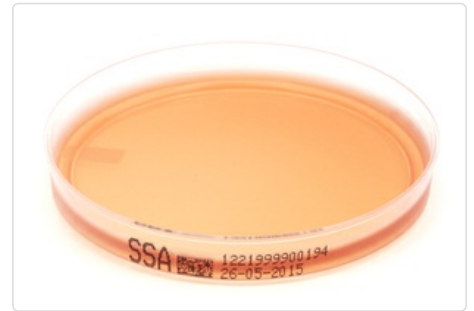


Salmonella-Shigella-Agar, modificiert (SS-Agar)

Abbreviazione: SSA
Numero articolo: 40-1221
Scheda: Petri dish, 90mm
Colore: Red brown, transparent
Condizioni di stoccaggio prodotti: Dry, closed at 4-10°C
Data di scadenza: 4 Weeks
Valore pH: 7.3 ± 0.2 at 25°C



Destinazione e applicazione

Medium for the isolation of Salmonella and Shigella. The growth of gram-positive microorganisms is inhibited and the swarming of Proteus ssp. is suppressed.

Composizione tipica

in g per 1l Medium

Peptone	7.7
Meat extract	5
Yeast extract	2.3
Beef Bile	8.5
Lactose	10
Sodium citrate	5
Sodium thiosulphate	7
Ammonium Iron(III)-citrate	1
Brillant green	0.003
Neutral red	0.025
Agar	10

*Adjusted as required to meet performance standards

Controlli di qualita' microbiologici

The microbial performance test is carried out in conformity with the requirements of DIN EN ISO 11133.

Productivity

Incubation conditions: 24 ± 3 hours at 37 ± 1 °C; Inoculation concentration: 80 – 120 CFU

Organism	Test strain	Specification	Colony morphology
Salmonella enterica serovar Enteritidis	ATCC 13076 / WDCM 00030	50 – 130 %	Colorless colonies with black center
Shigella flexneri	ATCC 29903 / WDCM 00125	50 – 130 %	Small, colorless colonies - unchanged medium

Selektivität

Incubation conditions: 24 ± 3 hours at 37 ± 1 °C; Inoculation concentration: 10.000 – 1.000.000 CFU

Organism	Test strain	Specification	Colony morphology
Escherichia coli	ATCC 8739 / WDCM 00012	Inhibited	Red, opaque colonies with partially red precipitate
Staphylococcus aureus	ATCC 6538 / WDCM 00032	Complete inhibited	-

Microbial Contamination

Incubation conditions: 5 – 7 days at 20 – 25 °C and 5 – 7 days at 30 – 35 °C

Specification

Without microbial contamination